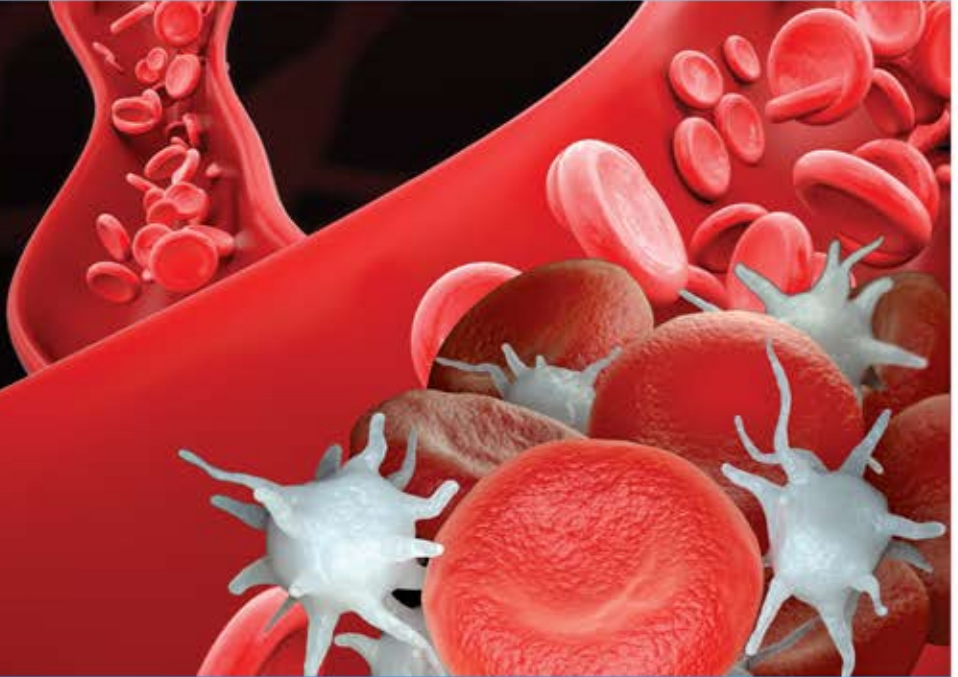


D-Dimer

CE



Quick test times | 55 minutes ELISA | 45 minutes CLIA

Quantitative D-Dimer tests in human plasma or serum for disease-monitoring including for DVT, PE and SARS COVID-19 *

- ✓ Highly purified, specific monoclonal antibody
- ✓ Broad range up to 10,000 ng/ml** ideal for elders and disease
- ✓ Excellent sensitivity with detection of 4.76 ng/ml

- ✓ Ready-to-use reagents: no recon or dilution
- ✓ Fast and easy procedure: ambient incubation, no shaking
- ✓ Low sample volume of 25µl ideal for pediatric patients

* According to recently published research by CDC, [Read More](#)

** Range increases with age, normal < 500 ng/ml, [Read More](#)

Visit
Website
to Order





Additional Benefits

- ✓ **HIGH YIELD**
Only manual method with two-point re-calibration*** allows more patients samples at a lower cost-per-test
- ✓ **EASILY AUTOMATED**
Adaptable to open systems, including those sold by Monobind
- ✓ **ECONOMICAL**
Internal quality control (and calibrators), no need to buy any additional components****

*** When used with our Monobind ELISA and CLIA analyzers, [View Instruments](#)

**** Other D-Dimer kits require users buy calibrators and quality controls separately

Item

- 12025-300A** D-Dimer AccuBind ELISA Kit - 96 wells
- 12075-300A** D-Dimer AccuLite CLIA Kit - 96 wells

Companion SARS-Covid-19 products from Monobind available in ELISA and CLIA

- Anti-SARS-CoV2 Antibody Tests (IgA, IgG and IgM)
- PCT (Procalcitonin) Marker for Sepsis

Contact us today to learn more
www.monobind.com :: sales@monobind.com

